

**Honeywell**  
**MILLER®**



**Honeywell DuraHoist™ Arm System**

**DuraHoist™ Arm System provides safe access to restricted areas and maximises worker efficiency while minimizing fatigue.**

## **DuraHoist Arm system - complete portable base for manhole, confined space and rescue/retrieval applications.**

- Lightweight, manageable components for easy storage, transport and set-up
- Safer operation thanks to the patented bracket technology, allowing the mounting of fall arrest and rescue device and winch on the same side of the DuraHoist Arm
- Modular design allows the use of fixed or portable base and an optional mast with extensions
- Winch for material handling and/or lifeline system may be mounted as required
- Certified to the last requirements of the EN 795:2012 class A and B

### **What's a fall arrest system for confined spaces?**

- 1 ANCHORAGE STRUCTURE**  
Fall arrest system compliant to EN795:2012 B
- 2 WINCH**  
Lifting load disposal. Machine Directive 2006/42/CEE
- 3 SELF RETRACTING LIFELINE WITH RETRIEVAL WINCH**  
Compliant to EN 360:2002 and EN 1496:2006
- 4 SAFETY HARNESS**  
Compliant to EN 361:2002





# DuraHoist Arm Features and Benefits

- Designed for manhole and confined space rescue/ retrieval applications
- Compatible accessories (winch/ rescuing device) between DuraHoist Tripod and DuraHoist Arm systems
- Certified to the last requirements of the EN 795:2012 class A and B

## QUICK & EASY COMPONENTS CONNECTION

- + Easy bracket connection in one move to the arm
- + Bracket end termination to fix carabiner when not attached to the harness D-ring or load

## COMPATIBLE ACCESSORIES

- + Winch and lifeline system compatible between DuraHoist Arm and Tripod
- + Winch fixed above rescue device to ensure optimal cable sliding functionality

## PORTABLE OR FIXED BASE SOLUTION

- + Tightening Lock Screws for better stability of the portable base
- + Portable or fixed base options in galvanized or stainless steel

## ADJUSTABILITY

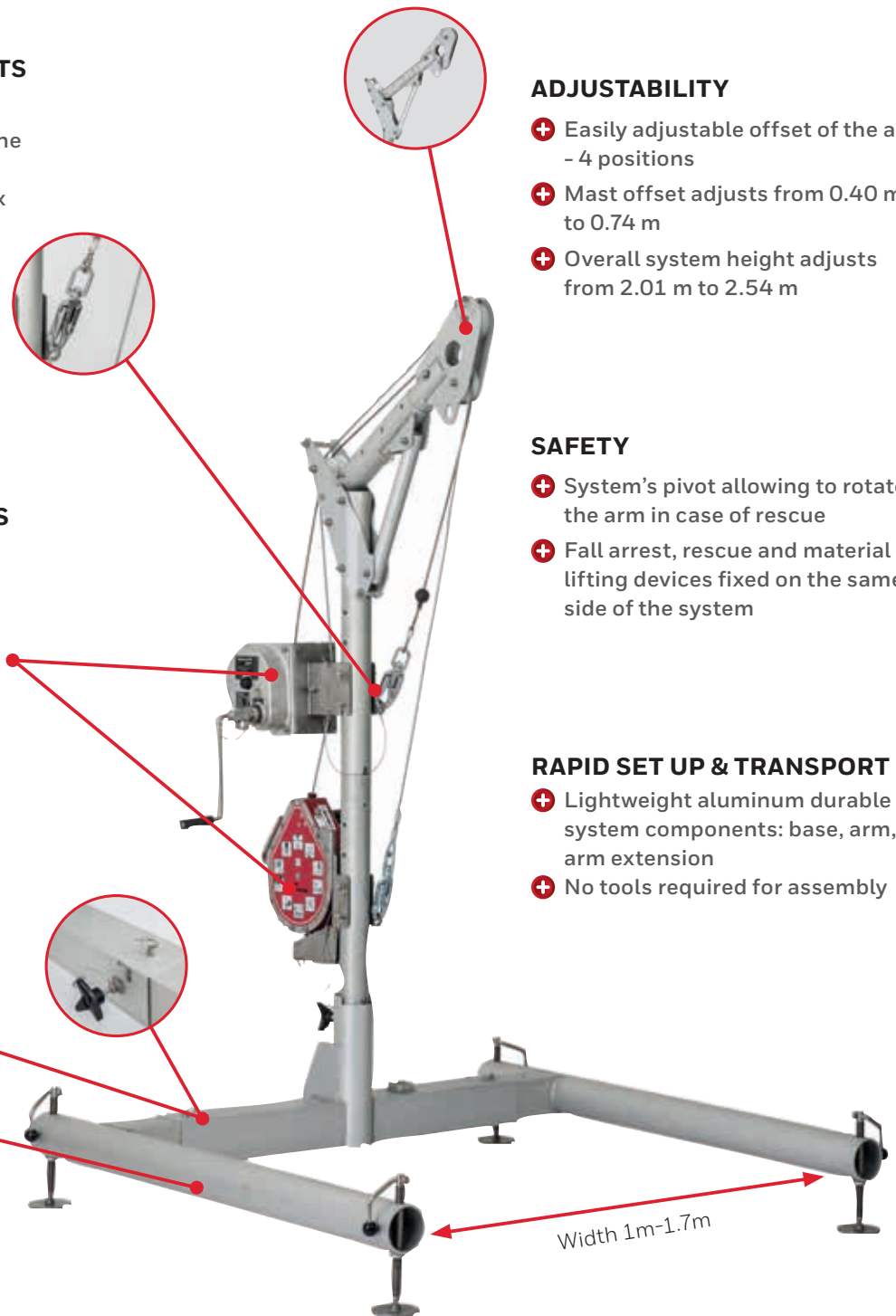
- + Easily adjustable offset of the arm - 4 positions
- + Mast offset adjusts from 0.40 m to 0.74 m
- + Overall system height adjusts from 2.01 m to 2.54 m

## SAFETY

- + System's pivot allowing to rotate the arm in case of rescue
- + Fall arrest, rescue and material lifting devices fixed on the same side of the system

## RAPID SET UP & TRANSPORT

- + Lightweight aluminum durable system components: base, arm, arm extension
- + No tools required for assembly



## Adjustable Options

- Two upper part options - DuraHoist Arm and DuraHoist Arm XL
- Two adjustable mast length options - 0.8 m and 1.40 m



### DURAHOIST ARM

- Mobile Anchor Device - Upper part
- Mast offset adjusts from 0.4 to 0.65m
- Compatible with any Arm Extension



### DURAHOIST ARM XL

- Mobile Anchor Device - Upper part
- Mast offset adjusts from 0,65 to 0,9m
- **Not to be used with DuraHoist Arm Portable base**



### DURAHOIST ARM EXTENTION

Extensions provide the flexibility to change overall mast height from 0.8 m to 1.40 m

Two lengths options:

- DuraHoist Arm Extension 1.4m
- DuraHoist Arm Extension 0.8m

REF	DESCRIPTION	WEIGHT
1034532	Arm	12.5 kg
1034533	Arm XL	13.8 kg
1034535	0.8 m Arm Extention	8.0 kg
1034534	1.4 m Arm Extention	11.4 kg
1034543	DuraHoist Portable System ( Portable Base/ Arm/Arm Extention 0.8 m)	

## Portable & Fixed Base Options

- All of the following bases are compatible with all Adjustable Arm Options.  
Portable base must not be used with DuraHoist Arm XL.
- All base options include PVC liner.

### Portable Base



#### DURAHOIST ARM PORTABLE BASE

Ideal for work areas where frequent set-up and tear-down is required. Portable attachment for DuraHoist Arm and Extension. Three lightweight aluminum components for easy transport. Features adjustable screws and a built-in level indicator for easy set-up on uneven surfaces. No tools required for assembly. Width between legs 1-1,7m.

REF	DESCRIPTION	WEIGHT
1034536	DuraHoist Arm Portable Base St Steel	26.4 kg

### Fixed bases, mounted to the existing structures



#### FLOOR BASE

- Mounts to horizontal concrete or steel structures.
- Comes with PVC sleeve liner
- Galva or stainless steel versions

REF	DESCRIPTION	WEIGHT
1034538	DuraHoist Floor Base SS	7.1 kg
1034537	DuraHoist Arm Floor Base Galva	7.0 kg



#### WALL BASE

Designed for shoring, wall and parapet applications where frequent set-up over varying wall thicknesses is required.

Not specify for EMEA version. More info in UI.

- Comes with PVC sleeve liner
- Galvanised or stainless steel versions

REF	DESCRIPTION	WEIGHT
1034539	DuraHoist Arm Wall Base Galva	6.9 kg
1034540	DuraHoist Arm Wall Base St Steel	7.0 kg

# DuraHoist Arm System Accessories

## MIGHTEVAC® Rescue/ Retrieval Hoist

- Combines the superior performance and reliability of the Miller MightyLite™ SRL with a quick-activating retrieval mechanism for emergency evacuation.
- 136 kg weight capacity
- For emergency evacuation only \*
- Compatible with Durahoist Tripod and Durahoist Arm System

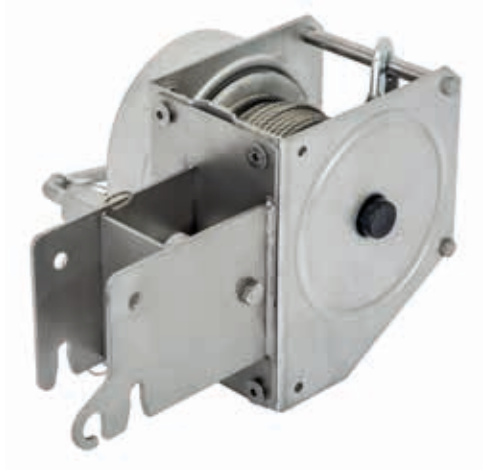


*\* Must be inspected by a Miller authorized service center if involved in a fall or it fails user visual or function inspection.*

REF	DESCRIPTION	WEIGHT
1005149-A	MightEvac SRL 15 m Lifeline material: Galvanised steel	17.7 kg
1005160-A	MightEvac SRL 30 m.Lifeline material: Galvanised steel	17.7 kg
1014390-A	MightEvac SRL 15 m.Lifeline material: Stainless Steel	26.8 kg
1034542	DuraHoist Arm MightEvac Bracket 15m	3.2 kg
1035243	DuraHoist Arm MightEvac Bracket 30m	3.4 kg

## WINCH / MATERIAL HANDLING

- Durahoist Winch can be used to lower and lift equipment, tools and other types of materials: maximum weight load limit for material handling is 300 kg



REF	DESCRIPTION	LENGHT
1034611	Winch	15 m
1034612	Winch	30 m
1034541	DuraHoist Arm Winch Bracket 2.9 kg	-

## MAINTENANCE & REPAIR

- **Honeywell Miller Fall protection's Mechanical Service and repair program:** as required by the European legislation for the class 3 PPE and reminded in the user guide, the full equipment must be yearly inspected according the procedure described in the checklist delivered with the device.
- **A repair guide** including list of tools, inspection sheet, photos. We remind you that this repair guide is only dedicated to the technicians trained by Honeywell (Miller Service Point).
- List of Spare parts & prices available on demand.

*Please contact our Honeywell Training department for more information.*

## TRAINING

The use of our products is restricted to competent persons having undergone appropriate training (provided by an authorized person or organization) or under the supervision of a competent supervisor. The completion of this training must be recorded by the issue of a course certificate showing the date, location, name and company of the training organization, the full name of the user, etc.



**Dedicated full body  
safety harness:  
new confined spaces  
Miller H-Design®  
harness**

**FOR TECHNICAL QUESTIONS**  
**INDUSTRIAL SAFETY PPE TECHNICAL SUPPORT**

Free Phone: 00 800 3344 2803 (free calls in Europe)

Phone: +44 (0) 1698 647 087 (paid calls)

Email: IS.PPE.TECHSUPPORT.EUROPE@honeywell.com

**Honeywell Safety Products**

**FRANCE**

Honeywell Safety Products France SAS

Tél. : +33 (0)1 49 90 79 79

Fax : +33 (0)1 49 90 71 04

Email : info-france.hsp@honeywell.com

**INTERNATIONAL**

Honeywell Safety Products Europe SAS

Tél. : +33 (0)1 49 90 79 79

Fax : +33 (0)1 49 90 71 04

Email : info-export.hsp@honeywell.com

**BENELUX**

Honeywell Safety Products Benelux BV

Tél: +32 (0)2 728 2117

Fax: +32 (0)2 728 2396

Email: info-benelux.hsp@honeywell.com

[www.honeywellsafety.com](http://www.honeywellsafety.com)

01-18-013 GB - 05/2018

© 2018 Honeywell International Inc.

**Honeywell**  
**MILLER®**